

2024

 **RENIN**  
DOORS

CLOSET & BARN DOOR HARDWARE

CAN

**HD**SUPPLY

Interior Door & Hardware Collection

MKTD4664 - ENG

# WAREHOUSE

No two rooms are alike  
Why should your doors be?  
Endless design possibilities  
One perfect style

**MODEL BY0120 / 833170**

Slimline Framed with Clear Mirror Insert

# Closet Doors

Sometimes, what's within your closet needs a bit of covering up. Save space in small rooms by adding a sliding closet door to your enclosures, utilize a bifold closet door to stack up on style or try a pivot closet door to replace any memories of having a basic closet.



**PARSONS**  
BY0100BWWT / 833155



**GEORGIAN**  
BY0106BWWT / 833251



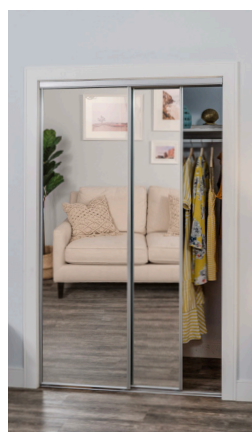
**ASHBURY**  
BY0108BWPR / Special Order



**MODEL BY0120**  
BY0120ASCL / Special Order



**MODEL BY0120**  
BY0120BWCL / 833170



**MODEL BY0220**  
BY0220ASWT / Special Order



**MODEL BY0230**  
BY0230ASCL / Special Order



**MODEL BY0230**  
BY0230BWCL / Special Order



**MODEL BIO221**  
BIO221BWCL / Special Order



**MODEL EU2030**  
EU2030BWFQ / Special Order

# Flush Panel Design Closet Doors

Sliding Bypass Doors are the perfect closet doors for any room. Smoothly rolling from side to side, they give you full access to all of the space in your closet.



## Technical Specifications

### Model Name: Parsons

Product Number	BY0100BWWT
Frame Finish / Color	Bright White
Function	Sliding Bypass
Door Insert Type	Pre-finished (Painted White) Panel Board
Door Frame Type	Steel
Track Type	Top Roll System   Steel
Product Grade	Residential/Commercial

### Product Numbers

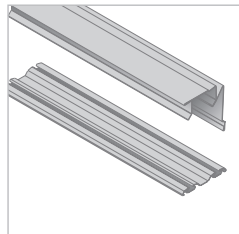
48" x 80"	BY0100BWWTC048080 / 833155
60" x 80"	BY0100BWWTC060080 / 833160
72" x 80"	BY0100BWWTC072080 / 833156
84" x 80"	BY0100BWWTC084080 (special order)
96" x 80"	BY0100BWWTC096080 / (special order)
108" x 80"	BY0100BWWTC108080 (special order)
120" x 80"	BY0100BWWTC120080 / (special order)
48" x 96"	BY0100BWWTC048096 / (special order)
60" x 96"	BY0100BWWTC060096 / (special order)
72" x 96"	BY0100BWWTC072096 / (special order)

*Adjustment of +0" to -4" on width*

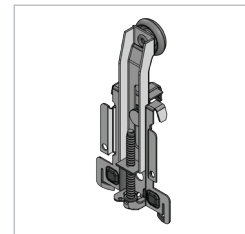
## Features & Benefits

- Easy-Hang hardware allow doors to lift and hook onto the top roll track system for fast installation
- Easy to maintain, light-weight prefinished flat white boards
- Adjustable Easy-Hang hardware correct out-of-square door openings improving installation appearance and operation
- Low profile Invisi-Track provides a hazard-free opening that allows for easy cleaning and smooth traveling doors
- Slimline steel frame with integrated handle design
- Top roll sliding system with Quick-Click Anti-Jump bottom guide Connector ensures doors do not disengage from the track

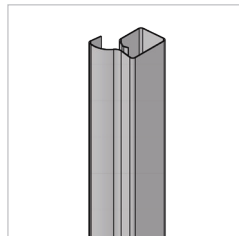
## Door Components



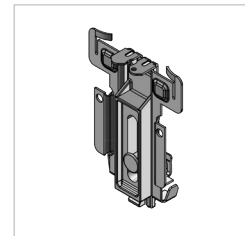
Tracks | Top Roll



Top Roller



Slimline



Bottom Guide

## Molded 6-Panel Design Closet Doors

Sliding Bypass Doors are the perfect closet doors for any room. Smoothly rolling from side to side, they give you full access to all of the space in your closet.



### Technical Specifications

#### Model Name: Georgian

Product Number	BY0106BWWT
Frame Finish / Color	Bright White
Function	Sliding Bypass
Door Insert Type	Pre-finished (Painted White) Molded Panel Board
Door Frame Type	Steel
Track Type	Top Roll System   Steel
Product Grade	Residential/Commercial

### Product Numbers

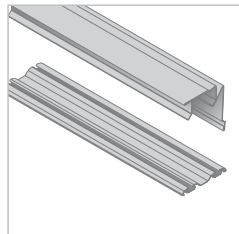
48" x 80"	BY0106BWWTE048080 / 833251
60" x 80"	BY0106BWWTE060080 / 833252
72" x 80"	BY0106BWWTE072080 / 833253
48" x 96"	BY0106BWWTE048096 / (special order)
60" x 96"	BY0106BWWTE060096 / (special order)
72" x 96"	BY0106BWWTE072096 / (special order)

*\*Adjustment of +0" to -4" on width*

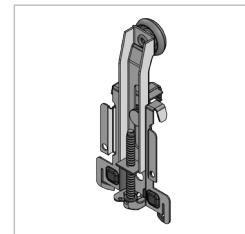
### Features & Benefits

- Easy-Hang hardware allow doors to lift and hook onto the top roll track system for fast installation
- Easy to maintain, light-weight prefinished flat white boards
- Adjustable Easy-Hang hardware correct out-of-square door openings improving installation appearance and operation
- Low profile Invisi-Track provides a hazard-free opening that allows for easy cleaning and smooth traveling doors
- Slimline steel frame with integrated handle design
- Top roll sliding system with Quick-Click Anti-Jump bottom guide Connector ensures doors do not disengage from the track

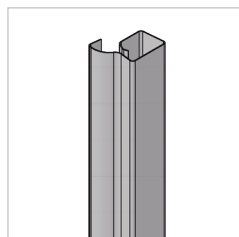
### Door Components



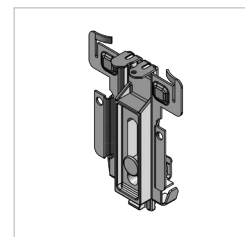
Tracks | Top Roll



Top Roller



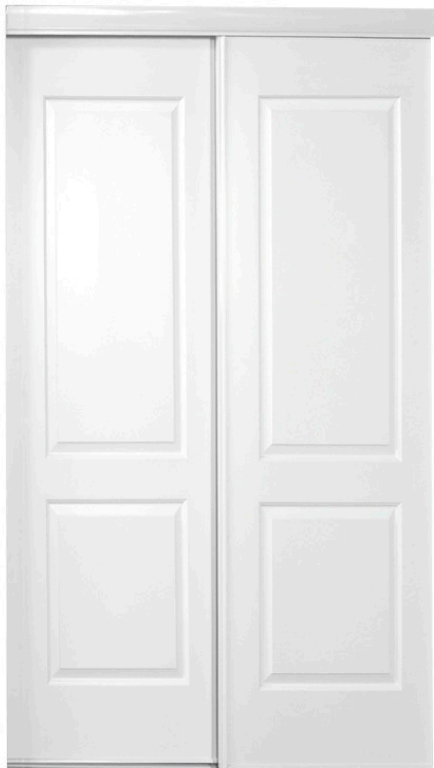
Slimline



Bottom Guide

## Molded 2-Panel Design Closet Doors

Sliding Bypass Doors are the perfect closet doors for any room. Smoothly rolling from side to side, they give you full access to all of the space in your closet.



### Technical Specifications

#### Model Name: Ashbury

Product Number	BY0108BWPR
Frame Finish / Color	Bright White
Function	Sliding Bypass
Door Insert Type	Pre-finished (Painted White) Molded Panel Board
Door Frame Type	Steel
Track Type	Top Roll System   Steel
Product Grade	Residential/Commercial

#### Product Numbers

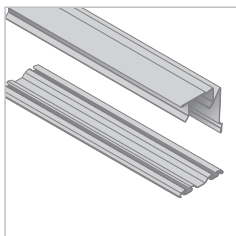
48" x 80"	BY0108BWPRC048080 (special order)
60" x 80"	BY0108BWPRC060080 / (special order)
72" x 80"	BY0108BWPRC072080 (special order)

*Adjustment of +0" to -4" on width*

### Features & Benefits

- Easy-Hang hardware allow doors to lift and hook onto the top roll track system for fast installation
- Easy to maintain, light-weight prefinished flat white boards
- Adjustable Easy-Hang hardware correct out-of-square door openings improving installation appearance and operation
- Low profile Invisi-Track provides a hazard-free opening that allows for easy cleaning and smooth traveling doors
- Slimline steel frame with integrated handle design
- Top roll sliding system with Quick-Click Anti-Jump bottom guide Connector ensures doors do not disengage from the track

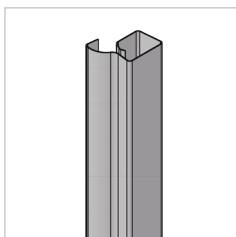
### Door Components



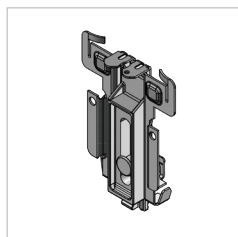
Tracks | Top Roll



Top Roller



Slimline



Bottom Guide

## Slimline Framed Mirror Closet Doors

Sliding Bypass Doors are the perfect closet doors for any room. Smoothly rolling from side to side, they give you full access to all of the space in your closet.



### Technical Specifications

#### Model Name: Model 120

Product Number	BY0120ASCL
Frame Finish / Color	Arctic Silver
Function	Sliding Bypass
Door Insert Type	Pre-finished Clear Mirror Insert
Door Frame Type	Steel
Track Type	Top Roll System   Steel
Product Grade	Residential/Commercial

#### Product Numbers

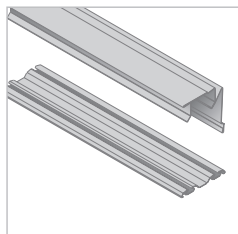
36" x 80"	BY0120ASCLC036080 (special order)
48" x 80"	BY0120ASCLC048080 / (special order)
60" x 80"	BY0120ASCLC060080 / (special order)
72" x 80"	BY0120ASCLC072080 / (special order)

*Adjustment of +0" to -4" on width*

### Features & Benefits

- Easy-Hang hardware allow doors to lift and hook onto the top roll track system for fast installation
- Easy to maintain, light-weight prefinished clear mirror insert
- Adjustable Easy-Hang hardware correct out-of-square door openings improving installation appearance and operation
- Low profile Invisi-Track provides a hazard-free opening that allows for easy cleaning and smooth traveling doors
- Slimline steel frame with integrated handle design
- Top roll sliding system with Quick-Click Anti-Jump Connector ensures doors do not disengage from the track

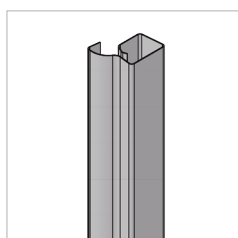
### Door Components



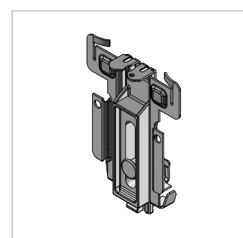
Tracks | Top Roll



Top Roller



Slimline



Bottom Guide

## Slimline Framed Mirror Closet Doors

Sliding Bypass Doors are the perfect closet doors for any room. Smoothly rolling from side to side, they give you full access to all of the space in your closet.



### Technical Specifications

#### Model Name: Model 120

Product Number	BY0120BWCL
Frame Finish / Color	Bright White
Function	Sliding Bypass
Door Insert Type	Pre-finished Clear Mirror Insert
Door Frame Type	Steel
Track Type	Top Roll System   Steel
Product Grade	Residential/Commercial

### Product Numbers

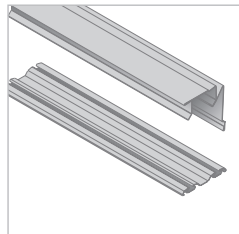
36" x 80"	BY0120BWCLC036080 (special order)
48" x 80"	BY0120BWCLC048080 / 833170
60" x 80"	BY0120BWCLC060080 / 833172
72" x 80"	BY0120BWCLC072080 / 833173

*Adjustment of +0" to -4" on width*

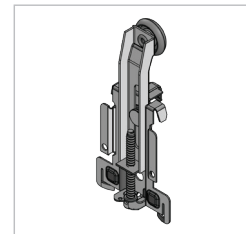
### Features & Benefits

- Easy-Hang hardware allow doors to lift and hook onto the top roll track system for fast installation
- Easy to maintain, light-weight prefinished clear mirror insert
- Adjustable Easy-Hang hardware correct out-of-square door openings improving installation appearance and operation
- Low profile Invisi-Track provides a hazard-free opening that allows for easy cleaning and smooth traveling doors
- Slimline steel frame with integrated handle design
- Top roll sliding system with Quick-Click Anti-Jump Connector ensures doors do not disengage from the track

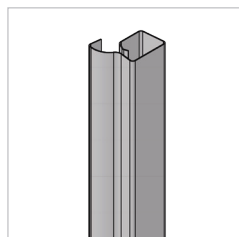
### Door Components



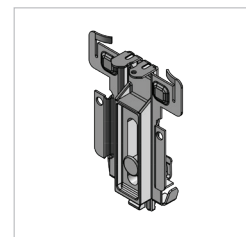
Tracks | Top Roll



Top Roller



Slimline



Bottom Guide



## Slimline Framed Mirror Design Closet Doors

Sliding Bypass Doors are the perfect closet doors for any room. Smoothly rolling from side to side, they give you full access to all of the space in your closet.



### Technical Specifications

#### Model Name: Model 220

Product Number	BY0220ASWT
Frame Finish / Color	Arctic Silver
Function	Sliding Bypass
Door Insert Type	Pre-finished Clear Mirror Insert
Door Frame Type	Steel
Track Type	Bottom Roll System   Steel
Product Grade	Residential/Commercial

### Product Numbers

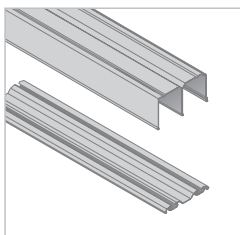
48" x 80"	BY0220ASCLC048080 / (special order)
60" x 80"	BY0220ASCLC060080 / (special order)
72" x 80"	BY0220ASCLC072080 / (special order)
84" x 80"	BY0220ASCLC084080 (special order)
96" x 80"	BY0220ASCLC096080 (special order)
108" x 80"	BY0220ASCLC108080 (special order)
120" x 80"	BY0220ASCLC120080 (special order)
144" x 80"	BY0220ASCLC144080 (special order)
192" x 80"	BY0220ASCLC192080 (special order)

*\*Adjustment of +0" to -4" on width*

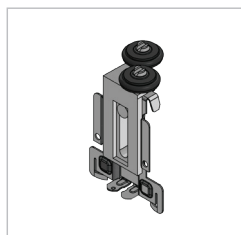
### Features & Benefits

- Easy-Glide hardware allow doors to travel effortlessly
- Easy to maintain, Safety-Shield backed clear-mirror panels
- Adjustable Quick-Click guides correct out-of-square door openings improving installation appearance and operation
- Low profile Invisi-Track provides a hazard-free opening that allows for easy cleaning and smooth traveling doors
- Slimline steel frame with integrated handle design
- Bottom roll sliding system with Quick-Click Anti-Jump Connector that ensures doors do not disengage from the track

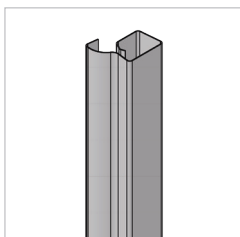
### Door Components



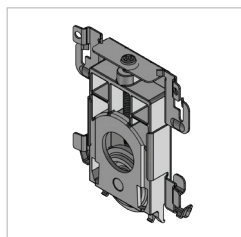
Tracks | Bottom Roll



Top Guide



Slimline



Bottom Roller

## Contemporary Framed Mirror Design Closet Doors

Sliding Bypass Doors are the perfect closet doors for any room. Smoothly rolling from side to side, they give you full access to all of the space in your closet.



### Technical Specifications

#### Model Name: Model 230

Product Number	BY0230ASCL
Frame Finish / Color	Arctic Silver
Function	Sliding Bypass
Door Insert Type	Pre-finished Clear Mirror Insert
Door Frame Type	Steel
Track Type	Bottom Roll System   Steel
Product Grade	Residential/Commercial

### Product Numbers

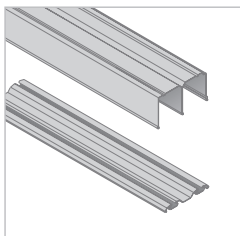
48" x 80"	BY0230ASCLC048080 / (special order)
60" x 80"	BY0230ASCLC060080 / (special order)
72" x 80"	BY0230ASCLC072080 / (special order)
84" x 80"	BY0230ASCLC084080 (special order)
96" x 80"	BY0230ASCLC096080 / (special order)

*\*Adjustment of +0" to -4" on width*

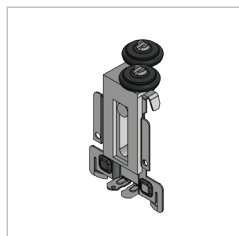
### Features & Benefits

- Easy-Glide hardware allow doors to travel effortlessly
- Easy to maintain, Safety-Shield backed clear-mirror panels
- Adjustable Quick-Click guides correct out-of-square door openings improving installation appearance and operation
- Low profile Invisi-Track provides a hazard-free opening that allows for easy cleaning and smooth traveling doors
- Contemporary Wide Curved Stile steel frame with integrated handle design
- Bottom roll sliding system with Quick-Click Anti-Jump Connector that ensures doors do not disengage from the track

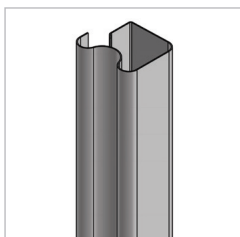
### Door Components



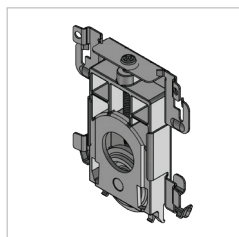
Tracks | Bottom Roll



Top Guide



Contemporary Wide Curved



Bottom Roller

## Contemporary Framed Mirror Design Closet Doors

Sliding Bypass Doors are the perfect closet doors for any room. Smoothly rolling from side to side, they give you full access to all of the space in your closet.



### Technical Specifications

#### Model Name: Model 230

Product Number	BY0230BWCL
Frame Finish / Color	Bright White
Function	Sliding Bypass
Door Insert Type	Pre-finished Clear Mirror Insert
Door Frame Type	Steel
Track Type	Bottom Roll System   Steel
Product Grade	Residential/Commercial

### Product Numbers

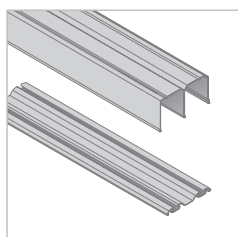
48" x 80"	BY0230BWCLC048080 / (special order)
60" x 80"	BY0230BWCLC060080 / (special order)
72" x 80"	BY0230BWCLC072080 / (special order)
96" x 80"	BY0230BWCLC096080 / (special order)
48" x 96"	BY0230BWCLC048096 / (special order)
60" x 96"	BY0230BWCLC060096 / (special order)
72" x 96"	BY0230BWCLC072096 / (special order)
96" x 96"	BY0230BWCLC096096 / (special order)

*Adjustment of +0" to -4" on width*

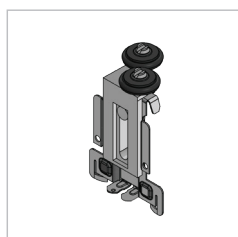
### Features & Benefits

- Easy-Glide hardware allow doors to travel effortlessly
- Easy to maintain, Safety-Shield backed clear-mirror panels
- Adjustable Quick-Click guides correct out-of-square door openings improving installation appearance and operation
- Low profile Invisi-Track provides a hazard-free opening that allows for easy cleaning and smooth traveling doors
- Contemporary Wide Curved Stile steel frame with integrated handle design
- Bottom roll sliding system with Quick-Click Anti-Jump Connector that ensures doors do not disengage from the track

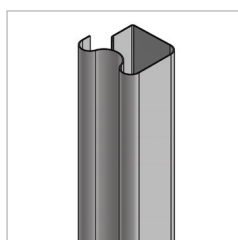
### Door Components



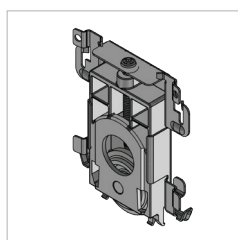
Tracks | Bottom Roll



Top Guide



Contemporary Wide Curved



Bottom Roller

# Contemporary Framed Mirror Design Closet Doors

We make it easy to slide sophistication across your closet with sliding bifold doors.



## Technical Specifications

### Model Name: Model 221

Product Number	BI0221BWCL
Frame Finish / Color	Bright White
Function	Sliding Bifold
Door Insert Type	Pre-finished Clear Mirror Insert
Door Frame Type	Steel
Track Type	Bottom Roll System   Steel
Product Grade	Residential/Commercial

### Product Numbers

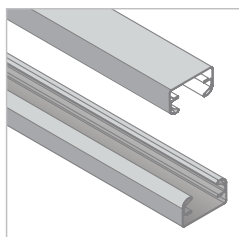
24" x 80"	BI0221BWCLE024080 / (special order)
30" x 80"	BI0221BWCLE030080 / (special order)
36" x 80"	BI0221BWCLE036080 / (special order)

*Adjustment of +0" to -4" on width*

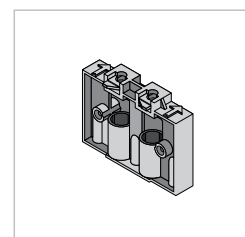
## Features & Benefits

- Offset pivot action creates an additional 4" for more complete access to your closet or space
- Increased adjustability for out-of-square door openings improves door appearance and operation
- Easy-Roll Connector results in less friction on the track for smoother travel
- Low profile, direct floor-mounted and pre-drilled bottom track for quick installation makes cleaning a breeze
- A metal pull attached to the inside frame stile between panels is used to operate the door

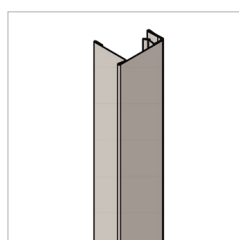
## Door Components



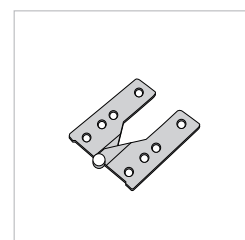
Tracks | Bottom Roll



Corner Block



Slimline



Hinge

## Euro Collection Bypass Closet Doors

Sliding Bypass Doors are the perfect closet doors for any room. Smoothly rolling from side to side, they give you full access to all of the space in your closet.



### Technical Specifications

#### Model Name: Model EU2030

Product Number	EU2030BWFG
Decor Finish	Off-White
Function	Sliding Bypass
Door Insert Type	4mm Frosted Glass Insert
Door Frame Type	Engineered Wood
Track Type	Top Roll System   Steel
Product Grade	Residential/Commercial

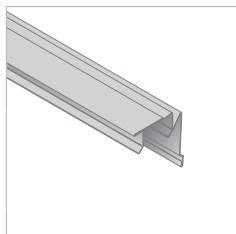
#### Product Numbers

48" x 80"	EU2030BWFGE048080 / (special order)
60" x 80"	EU2030BWFGE060080 / (special order)
72" x 80"	EU2030BWFGE072080 / (special order)

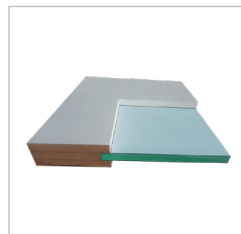
### Features & Benefits

- Dial-Adjust hanger hardware allow doors to lift and hook onto the double J track system for fast installation
- Prefinished doors saves time and money with no painting, staining or mess to clean up
- High quality engineered wood construction featuring a durable scratch-resistant finish
- 3-Lite 4mm tempered frosted glass provides strength, rigidity and contemporary look
- Includes matching fascia to complete the overall look of your room or space
- Cannot be painted, stained or cut

### Door Components



Tracks | Top Roll



4mm Frosted Glass Insert



Dial Adjust Hanger



Matching Fascia

SPECIAL ORDER

No two rooms are alike  
Why should your doors be?  
Endless design possibilities  
One perfect style

HALL 3-LITE

36" x 84" x 1<sup>3</sup>/<sub>8</sub>" | BD061

# BARN DOOR KITS

## EASY-BUILD BARN DOOR KIT

in Bright White with Matte Black Bent Strap Hardware



36" x 84" x 1 3/8" | BD069W01BW1BWE36084

## STONE K-DESIGN BARN DOOR KIT

in Iron Age Finish with Matte Black Bent Strap Hardware



36" x 84" x 1 3/8" | BD052W01IA1IAE36084

## STONE K-DESIGN BARN DOOR KIT

in Off-White with Matte Black Bent Strap Hardware



36" x 84" x 1 3/8" | BD052W01WT1WTE36084

## CHEVAL Z-DESIGN BARN DOOR KIT

in Iron Age Finish with Matte Black Bent Strap Hardware



36" x 84" x 1 3/8" | BD053W01IA1IAE36084

# BARN DOOR KITS

**SAGRADA DOUBLE X-DESIGN BARN DOOR KIT**  
in Gunstock Oak Finish with Matte Black Bent Strap Hardware



36" x 84" x 1 3/8" | BD060W01GO1GOE36084

**SALINAS Z-DESIGN BARN DOOR KIT**  
in Unfinished Pine with Matte Black Bent Strap Hardware



36" x 84" x 1 3/8" | BD053B01PN1PNE36084  
42" x 84" x 1 3/8" | BD053C01PN1PNE42084

**SIERRA K-DESIGN BARN DOOR KIT**  
in Unfinished Pine with Matte Black Bent Strap Hardware



36" x 84" x 1 3/8" | BD052B01PN1PNE36084

**HERRINGBONE CHEVRON-DESIGN BARN DOOR KIT** in  
Satin Nickel Gray Stain with Matte Black Bent Strap Hardware



36" x 84" x 1 3/8" | BD059C01NS1NSE36084



# BARN DOOR KITS

HALL 3-LITE BARN DOOR KIT with Frosted Glass in Bright White with Matte Black Bent Strap Hardware



36" x 84" x 1 3/8" | BD061W01BW3TGE36084

HALL 3-LITE BARN DOOR KIT with Frosted Glass in Iron Age with Matte Black Bent Strap Hardware



36" x 84" x 1 3/8" | BD061W01IA3TGE36084

PAVILION 5-LITE BARN DOOR KIT with Frosted Glass in Bright White with Matte Black Bent Strap Hardware



36" x 84" x 1 3/8" | BD062W01BW5TGE36084

PAVILION 5-LITE BARN DOOR KIT with Frosted Glass in Iron Age with Matte Black Bent Strap Hardware



36" x 84" x 1 3/8" | BD062W01IA5TGE36084

# BARN DOOR KITS

DUNMORE K-LITE BARN DOOR KIT with Frosted Glass  
in Iron Age with Matte Black Bent Strap Hardware



36" x 84" x 1 3/8" | BD064W01IA1TGE36084

CRISTO 1-LITE BARN DOOR KIT  
in Iron Age with Matte Black Bent Strap Hardware



36" x 84" x 1 3/8" | BD054W01IA1TGE36084

# SLABS

STONE K-DESIGN BARN DOOR SLAB  
in Bright White



36" x 84" x 1 3/8" | BD052W09BW1BWE36084  
42" x 84" x 1 3/8" | BD052W09BW1BWE42084

STONE K-DESIGN BARN DOOR SLAB  
in Silver Oak



36" x 84" x 1 3/8" | BD052W09GY1GYE36084  
42" x 84" x 1 3/8" | BD052W09GY1GYE42084

# Barn Door Hardware

Adding the finishing touches to any renovation or decorating project can complete a home's look. Hardware plays an important role in enhancing the style of a space. With a multitude of choices available, factors to consider can include how well a particular style or colour complements the overall design theme and how the hardware will function within the space relative to other important decor items. Hardware is like adding jewelry to a room, the personality that makes the room reflect the home owners style and interests.

## Hardware Styles

### Straight Strap Hardware

Model BD100K



Stainless Steel

#### MATTE BLACK

**Available in:**

78" | BD101K-07800-MB  
96" | BD101K-09600-MB

#### STAINLESS STEEL

**Available in:**

78" | BD101K-07800-SS  
96" | BD101K-09600-SS

#### BRONZE

**Available in:**

78" | BD101K-07800-BR  
96" | BD101K-09600-BR

### Top of Door Hardware

Model BD101K



Stainless Steel

#### MATTE BLACK

**Available in:**

78" | BD100K-07800-MB  
96" | BD100K-09600-MB

#### STAINLESS STEEL

**Available in:**

78" | BD100K-07800-SS  
96" | BD100K-09600-SS

#### BRONZE

**Available in:**

78" | BD100K-07800-BR  
96" | BD100K-09600-BR

### Bent Strap Hardware

Model BD102K



Matte Black

#### MATTE BLACK

**Available in:**

78" | BD102K-07800-MB  
96" | BD102K-09600-MB

#### STAINLESS STEEL

**Available in:**

78" | BD102K-07800-SS

#### BRONZE

**Available in:**

78" | BD102K-07800-BR  
96" | BD102K-09600-BR

# BARN DOOR HARDWARE & ACCESSORIES

Renin's **Single Track Bypass** double barn door hardware kit eliminates the bulk of a traditional bypassing system by removing one of the tracks which allows your doors to be closer to the wall. This innovative double bypass barn door hardware system provides a more contemporary appearance with less hardware visible on the wall.

When wall space is an issue, the **Spectrum Bypass Barn Door Bracket Kit** will allow two barn doors to independently travel across two tracks and not require extra clearance. The double barn door hardware kit allows for one door to slide over another making it perfect for closets, pantries, or possibly even multiple openings on the same wall.

Product Image	Product Number	Track Size	Description
	BD280K-07800-MB	78"	Matte Black <b>Single Track Bypass</b> Barn Door Hardware Kit
	BD280K-09600-MB	96"	Matte Black <b>Single Track Bypass</b> Barn Door Hardware Kit
	BD280K-07800-SN	78"	Stainless Steel <b>Single Track Bypass</b> Barn Door Hardware Kit
	BD280K-09600-SN	96"	Stainless Steel <b>Single Track Bypass</b> Barn Door Hardware Kit
	BD670-07800-MB	78" (Set of 5 Brackets)	Spectrum <b>Bypass Barn Door Bracket Kit</b> in Matte Black
	BD670-09600-MB	96" (Set of 6 Brackets)	Spectrum <b>Bypass Barn Door Bracket Kit</b> in Matte Black
	BD670-07800-SS	78" (Set of 5 Brackets)	Spectrum <b>Bypass Barn Door Bracket Kit</b> in Stainless Steel
	BD670-09600-SS	96" (Set of 6 Brackets)	Spectrum <b>Bypass Barn Door Bracket Kit</b> in Stainless Steel


# BARN DOOR HARDWARE & ACCESSORIES

Product Image	Product Number	Color	Description
	BD125- <b>MB</b>	Matte Black	Spectrum <b>Biparting Track Joiner</b> in Matte Black
	BD125- <b>SS</b>	Stainless Steel	Spectrum <b>Biparting Track Joiner</b> in Stainless Steel
	BD400-100- <b>MB</b>	Matte Black	Spectrum Add-A-Door Kit with <b>Straight Strap</b> in Matte Black
	BD400-101- <b>MB</b>		Spectrum Add-A-Door Kit with <b>Top of Door Strap</b> in Matte Black
	BD400-102- <b>MB</b>		Spectrum Add-A-Door Kit with <b>Bent Strap</b> in Matte Black
	BD400-100- <b>SS</b>	Stainless Steel	Spectrum Add-A-Door Kit with <b>Straight Strap</b> in Stainless Steel
	BD400-101- <b>SS</b>		Spectrum Add-A-Door Kit with <b>Top of Door Strap</b> in Stainless Steel
	BD400-102- <b>SS</b>		Spectrum Add-A-Door Kit with <b>Straight Strap</b> in Stainless Steel

# BARN DOOR HARDWARE & ACCESSORIES

Product Image	Product Number	Color	Description
	BD414- <b>MB</b>	Matte Black	Alperton Barn Door Tubular <b>Handle</b> and Rectangular Pull in Matte Black
	BD414- <b>SN</b>	Stainless Steel	Alperton Barn Door Tubular <b>Handle</b> and Rectangular Pull in Stainless Steel
	BD450- <b>MB</b>	Matte Black	Cairns 6 1/2 in. Barn Door <b>Handle</b> in Matte Black
	BD450- <b>SS</b>	Stainless Steel	Cairns 6 1/2 in. Barn Door <b>Handle</b> in Stainless Steel
	BD460- <b>MB</b>	Matte Black	Rectangle Flush 6 1/2 in. Barn Door <b>Pull</b> in Matte Black
	BD460- <b>SS</b>	Stainless Steel	Rectangle Flush 6 1/2 in. Barn Door <b>Pull</b> in Stainless Steel
	BD250- <b>MB</b>	Matte Black	Tear Drop <b>Privacy Latch</b> in Matte Black
	BD250- <b>SS</b>	Stainless Steel	Tear Drop <b>Privacy Latch</b> in Stainless Steel

# BARN DOOR HARDWARE & ACCESSORIES

Product Image	Product Number	Weight Range	Description
	BDF960-2040- <b>MB</b>	44 to 88 lbs	Easy Clip <b>Soft Close Hardware</b> in Matte Black
	BDF960-4060- <b>MB</b>	88 to 132 lbs	Easy Clip <b>Soft Close Hardware</b> in Matte Black
	BDF960-6085- <b>MB</b>	132 to 187 lbs	Easy Clip <b>Soft Close Hardware</b> in Matte Black



## Renin

---

110 Walker Drive  
Brampton ON, L6T 4H6  
Canada

1141 Ryder Street  
Tupelo MS, 38804  
USA

1-800-493-5263

**[www.renin.com](http://www.renin.com)**  
**[info@renin.com](mailto:info@renin.com)**  
**[orders@renin.com](mailto:orders@renin.com)**

---

Follow us



DISTRIBUTED BY

**HD**SUPPLY<sup>®</sup>