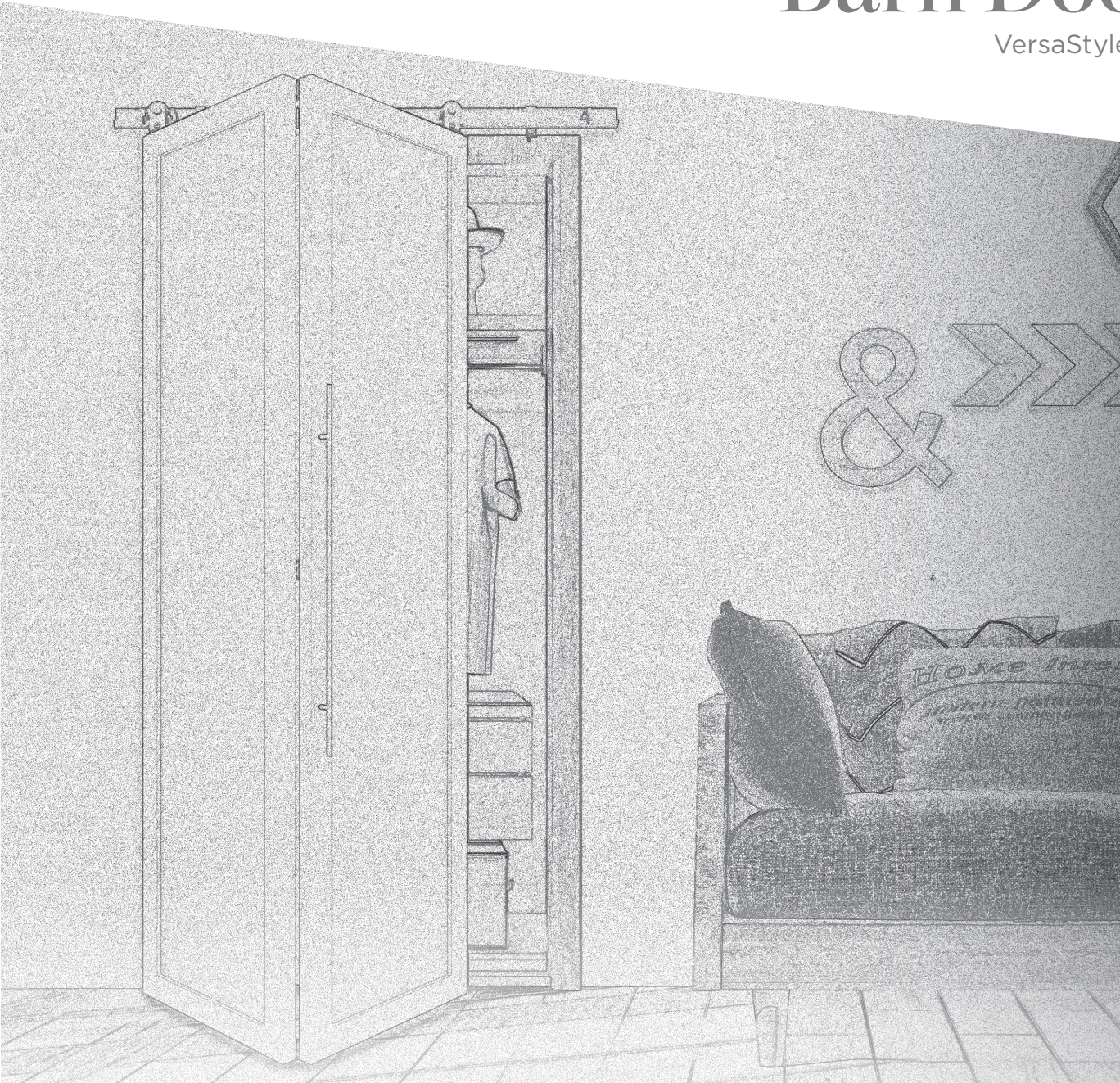


Barn Doors

VersaStyle Bifold

INSTALLATION INSTRUCTIONS



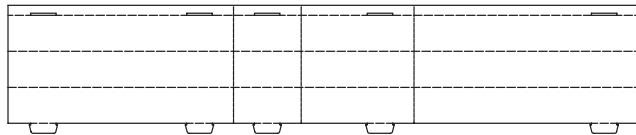
PACKAGE CONTENTS

16x



Cross Brace

2x



Installation Template

TOOLS REQUIRED (NOT PROVIDED)



Scissors



REQUIRES
TWO
PEOPLE

PLEASE READ CAREFULLY

- Read all instructions carefully.
- Protect your eyes by wearing safety goggles.
- Keep the installation area free of clutter.
- Follow each step completely before starting the next step.

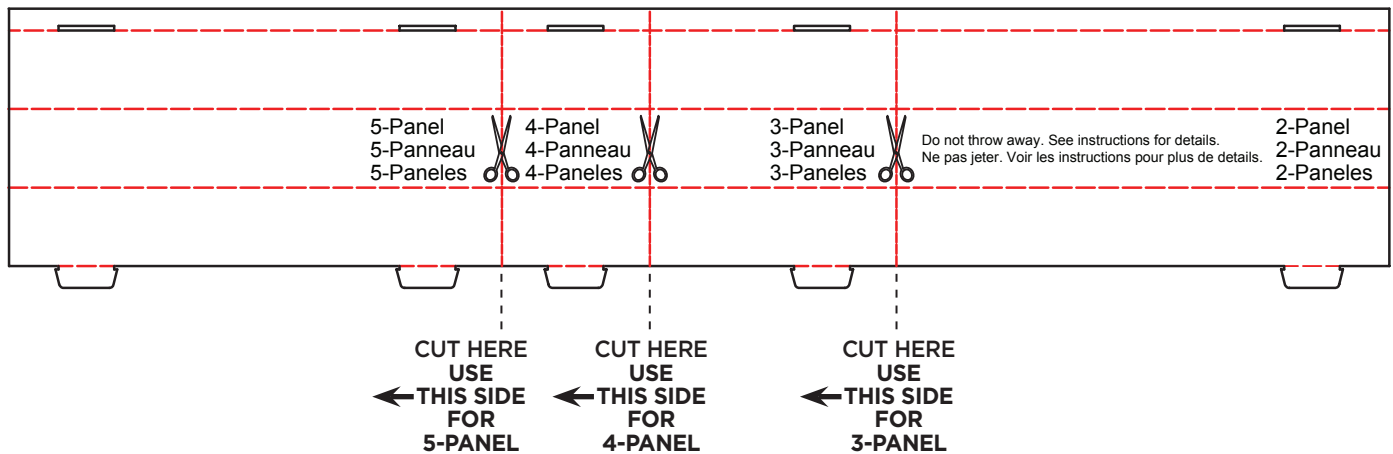
IMPORTANT!

VERIFY THAT ALL PARTS ARE INCLUDED IN THE PACKAGING. IF ANY PARTS ARE MISSING, DO NOT RETURN THIS PRODUCT TO THE STORE.

FOR PARTS ASSISTANCE, PLEASE CALL 1-800-493-5263 BETWEEN 8:30 AM AND 4:30 PM EST, MONDAY TO FRIDAY. SUPPORT IS PROVIDED IN ENGLISH, FRENCH AND SPANISH.

PRE-ASSEMBLY

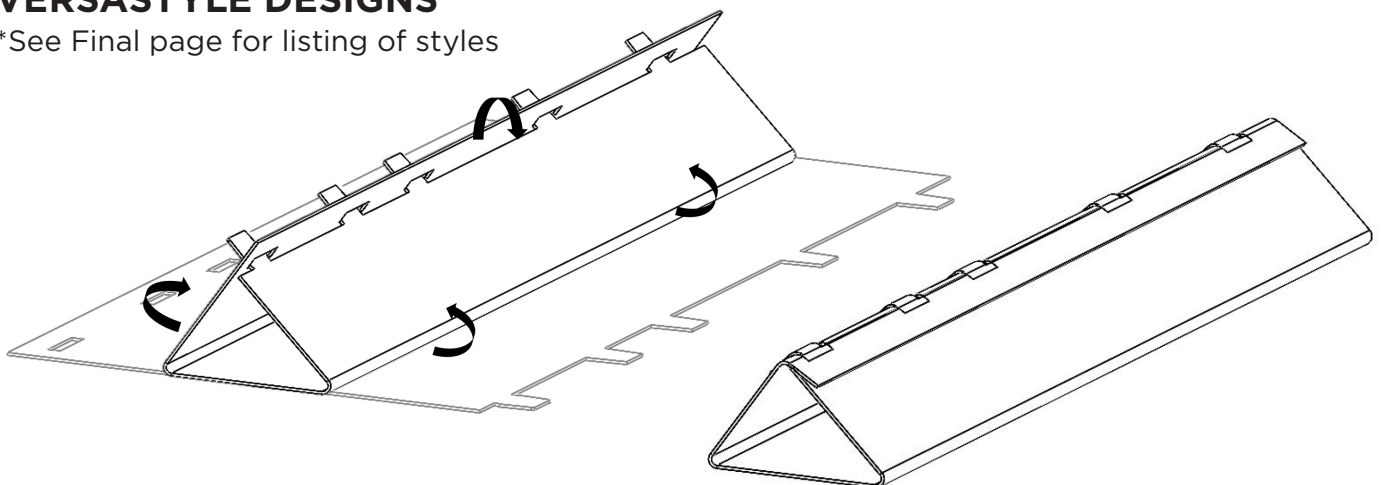
Use the provided template for correct Cross Brace placement.
No tape measure required.



Choose your desired style* and cut the template accordingly.
For a 2-Panel design no cutting is required.

VERASTYLE DESIGNS

*See Final page for listing of styles



Once cut, fold the template to form a triangle. This will create a rigid template to ensure accurate placement of cross braces.

STEP 1 Installing Cross Braces

Note: Surface should be clean and dry before installing Cross Brace.

ATTENTION: INSTALL CROSS BRACES BEFORE HANGING YOUR DOOR.

Following example is a 3-panel design

- Place templates on the left and right of bottom stile
- Remove film covering the double sided tape on the back of the Cross Brace (Fig. 2)
- Install the first Cross Brace at the end of the template
- Repeat for 2nd panel

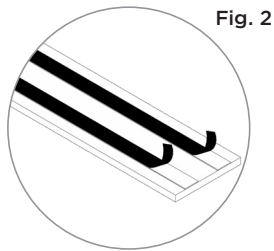


Fig. 2

5-Panel	4-Panel	3-Panel
5-Panneau	4-Panneau	3-Panneau
5-Paneles	4-Paneles	3-Paneles

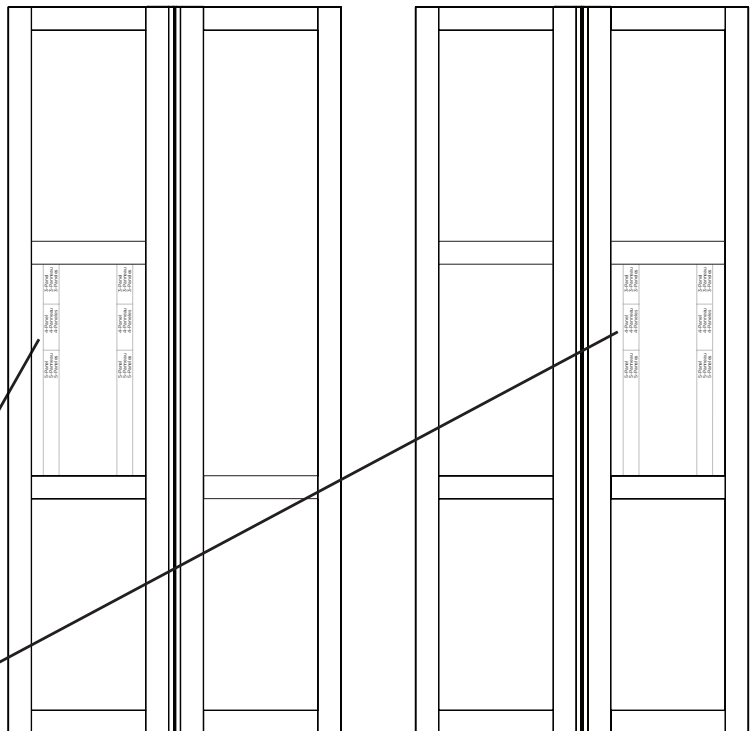


STEP 2 Installing 2nd Cross Brace

- Move templates to the top of the first installed Cross Brace and repeat Step 1
- Repeat above for the 2nd panel

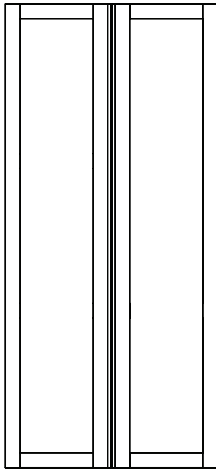
Note: Follow Steps 1 and 2 to install the Cross Braces on the opposite side of the door.

5-Panel	4-Panel	3-Panel
5-Panneau	4-Panneau	3-Panneau
5-Paneles	4-Paneles	3-Paneles

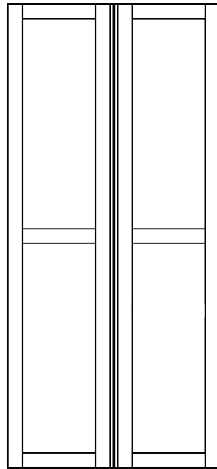


VERSASTYLE DESIGNS

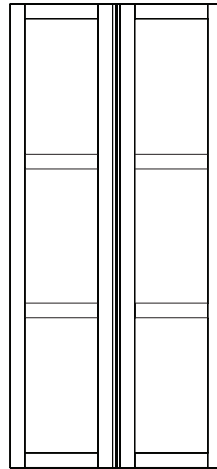
DESIGN YOUR DOOR!



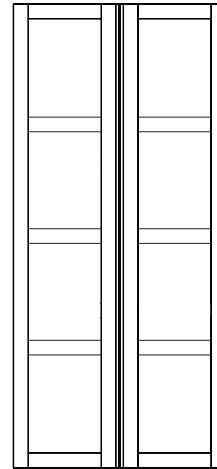
Base Slab
*Template not required



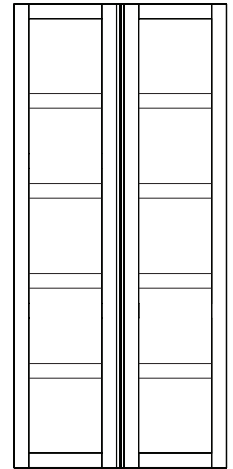
2-Panel



3-Panel



4-Panel



5-Panel

ENGINEERED WOOD BARN DOOR CARE & MAINTENANCE

- Pre-finished in white, hang as is or paint.
- Before you remove the door from its protective plastic bag, we advise that the door is acclimatized in the room you plan to install the door for 24 hours.
- Avoid installing near rooms with moisture or where temperatures change through the seasons. Optimal relative humidity in your home to prevent warp, twist, swelling, or shrinking in any wood product is 45% - 60%. Anything outside these parameters and their effects are the responsibility of the customer.
- Immediately clean spills with terry cloth or micro fiber to avoid damaging the surface. Do not use any hard tools or such that may scratch the surface, including pressure washers.
- Install indoors only.
- Do not trim the door.
- Lift and install with two people.
- Hang one door per track or a maximum weight of 250 lbs for two bypass doors (bypass hardware sold separately).
- Pre-drill any holes for hanging straps (where applicable) and before applying any additional accessory hardware.
- Do not clean with solvents or commercial cleaners as they may damage the finish on the door. When cleaning, wipe with a damp cloth or sponge in a small test area before attempting to remove any stain.

5 YEAR LIMITED WARRANTY

Products warranted against manufacturing defects for up to five years from the purchase date. The warranty applies only to the original purchaser of the product.

If a product is determined to be defective due to a manufacturing defect, a replacement product will be supplied. The scope of the warranty is limited to replacing the product and does not include labor required to install, repair or deliver, or any costs related to removing the existing product.

This warranty is void in the event that the product is damaged in transit, or if damage or failure is caused by abuse, misuse, storage of products in an improper environment, abnormal usage, faulty installation, failure to follow installation instructions, damage in an accident, improper maintenance, or any repair.

We reserve the right to inspect any claim prior to issuing credit.